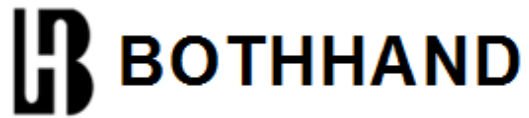
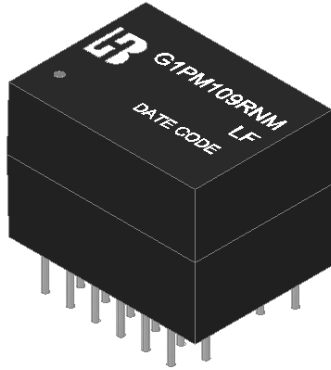


G1PM109RNM LF
DIP 1000 BASE-T Single Port Discrete
LAN Magnetics



Feature



- Designed for long haul gigabit Ethernet 1000 BASE-T, full duplex applications.
- Supports 4 pairs of category 5 UTP cable.
- Cable interface for isolation and low common mode emissions.
- Complying with IEEE 802.3ab standard for 1000 BASE-T.
- Complying with ROHS requirements.
- Operating temperature range: -40°C to +85°C.
- Storage temperature range: -40°C to +85°C.

Electrical Specifications @ 25°C

Part Number	Turns Ratio (±5%)		OCL (uH Min) @100KHz/0.1V	L.L (uH Max)	C _{w/w} (pF Max)	DCR (Ω Max)	HI-POT
	TX	RX					
G1PM109RNM LF	1CT:1CT	1CT:1CT	180	0.5	28	1.2	AC1500V/1mA

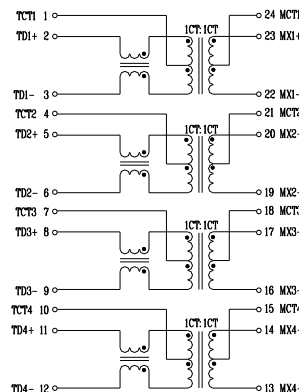
Continue

Part Number	Insertion Loss (dB Max)	Return Loss (dB Min) @Load 100Ω				
		1-100MHz	1-30MHz	40MHz	50MHz	60-80MHz
G1PM109RNM LF	-1.0	-18	-16	-14.08	-12.5	-10

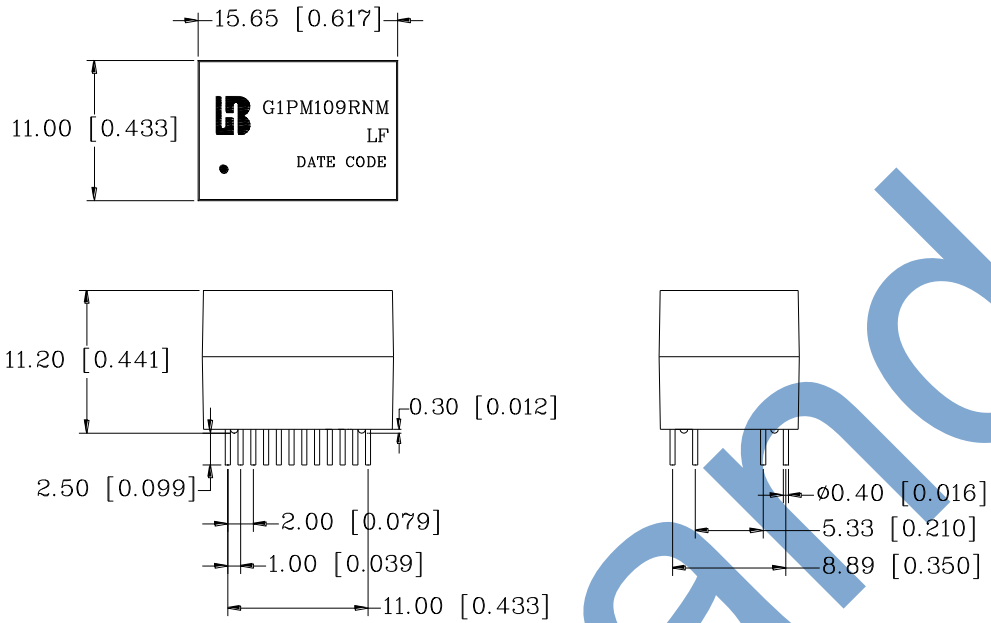
Continue

Part Number	Cross talk (dB Min)			DCMR (dB Min)		
	30MHz	60MHz	100MHz	30MHz	60MHz	100MHz
G1PM109RNM LF	-45	-40	-35	-43	-37	-33

Schematic

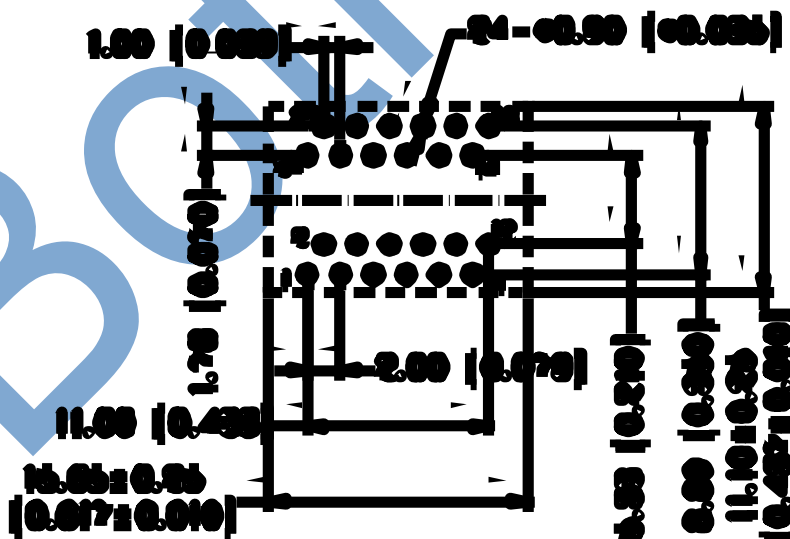


Mechanical



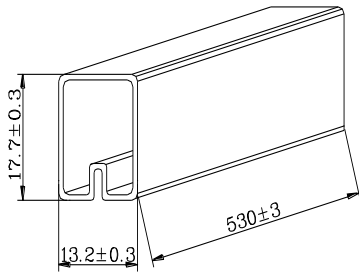
Units: mm[Inches] Tolerances : xx.xx±0.25[0.010]
 0.xx±0.05[0.002]

PCB Layout mounting Hole (Top View)

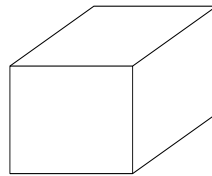


**Unless otherwise specified,
 all dimension tolerance are: ± 0.05 [± 0.003]**

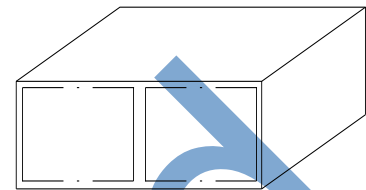
TUBE PACKAGE



TUBE



INNER BOX: 567x135x125



OUTER CARTON: 598x287x150

1. TUBE=32 PCS
2. INNER BOX=48TUBE= 54 x 32 = 1728 PCS
3. OUTER CARTON=2 INNER
CARTON= 1728 x 2 = 3456 PCS